



**REGIONAL SPECIALISED METEOROLOGICAL CENTRE-TROPICAL CYCLONES, NEW DELHI
TROPICAL WEATHER OUTLOOK**

DEMS-RSMC TROPICAL CYCLONES NEW DELHI DATED 05.11.2024

TROPICAL WEATHER OUTLOOK FOR THE NORTH INDIAN OCEAN (THE BAY OF BENGAL AND THE ARABIAN SEA) VALID FOR THE NEXT 168 HOURS ISSUED AT 0600 UTC OF 05.11.2024 BASED ON 0300 UTC OF 05.11.2024.

BAY OF BENGAL:

YESTERDAY'S CYCLONIC CIRCULATION OVER SOUTHEAST BAY OF BENGAL LAY OVER CENTRAL PARTS OF SOUTH BAY OF BENGAL AND EXTENDED UPTO 1.5 KM ABOVE MEAN SEA LEVEL TODAY AT 03 UTC OF 5TH NOVEMBER, 2024.

SCATTERED LOW AND MEDIUM CLOUDS WITH EMBEDDED MODERATE TO INTENSE CONVECTION LAY OVER BAY OF BENGAL AND ANDAMAN SEA.

***PROBABILITY OF CYCLOGENESIS (FORMATION OF DEPRESSION) DURING NEXT 168 HRS:**

24 HOURS	24-48 HOURS	48-72 HOURS	72-96 HOURS	96-120 HOURS	120-144 HOURS	144-168 HOURS
NIL	NIL	NIL	NIL	NIL	NIL	NIL

***NOTE: EVERY 24HR FORECAST IS VALID UPTO 0300 UTC (0830 IST) OF NEXT DAY**

ARABIAN SEA:

YESTERDAY'S CYCLONIC CIRCULATION OVER SOUTHEAST ARABIAN SEA LAY OVER CENTRAL PARTS OF SOUTH ARABIAN SEA AND EXTENDED UPTO 1.5 KM ABOVE MEAN SEA LEVEL AT 0300 UTC OF TODAY, THE 05TH OF NOVEMBER,2024.

A FRESH CYCLONIC CIRCULATION LAY OVER GULF OF MANNAR & ADJOINING SRI LANKA COAST AND EXTENDED UPTO 3.1 KM ABOVE MEAN SEA LEVEL AT 0300 UTC OF TODAY, THE 05TH OF NOVEMBER,2024.

SCATTERED LOW AND MEDIUM CLOUDS WITH EMBEDDED MODERATE TO INTENSE CONVECTION LAY OVER SOUTH & ADJOINING CENTRAL ARABIAN SEA, LAKSHADWEEP ISLANDS AREA, MALDIVES, AND COMORIN AREA.

***PROBABILITY OF CYCLOGENESIS (FORMATION OF DEPRESSION) DURING NEXT 168 HRS:**

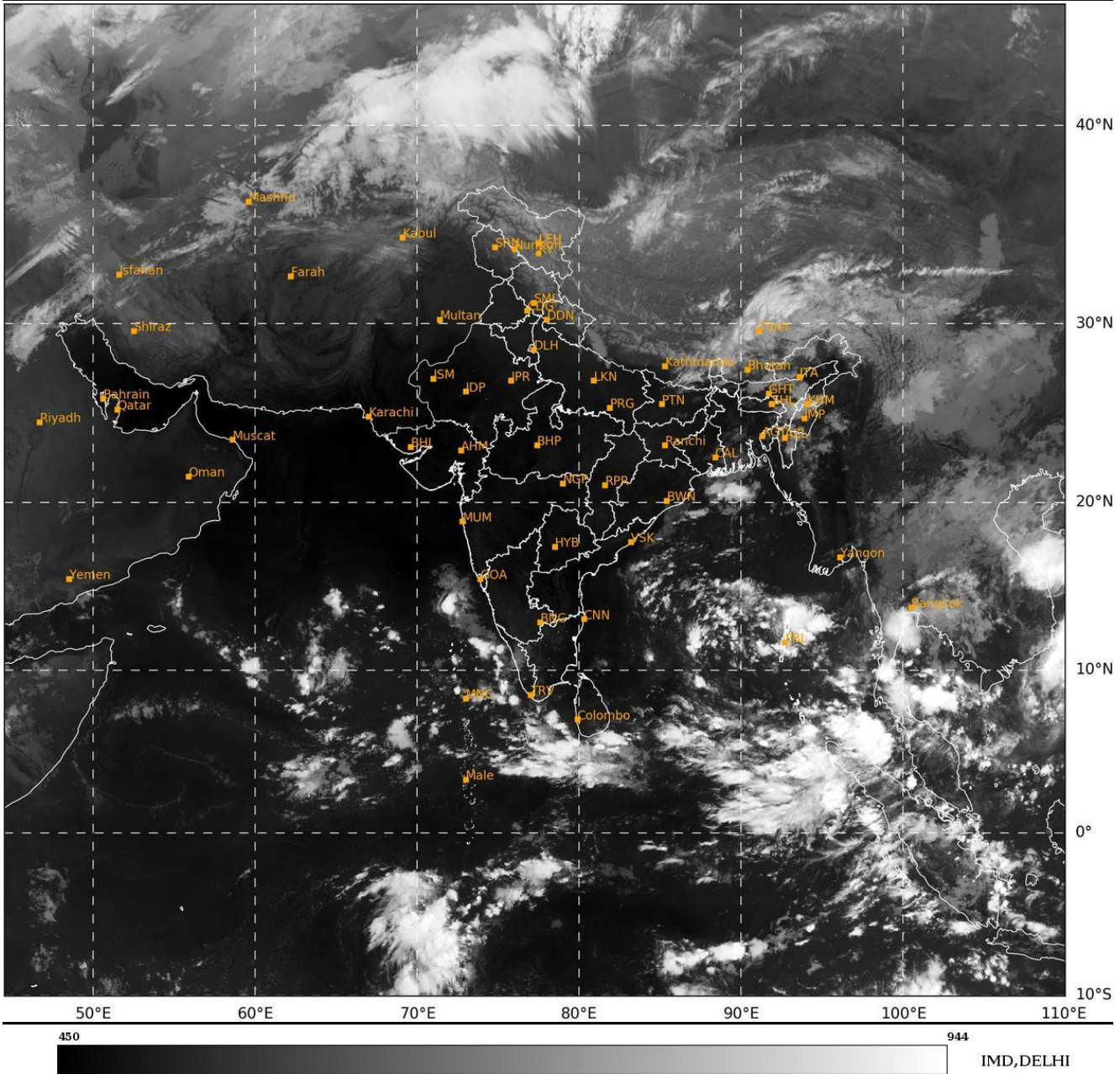
24 HOURS	24-48 HOURS	48-72 HOURS	72-96 HOURS	96-120 HOURS	120-144 HOURS	144-168 HOURS
NIL	NIL	NIL	NIL	NIL	NIL	NIL

***NOTE: EVERY 24HR FORECAST IS VALID UPTO 0300 UTC (0830 IST) OF NEXT DAY**

REMARKS: NIL.

SAT : INSAT-3DR IMG
IMG_TIR1 10.8 um
L1C Mercator

05-11-2024/(0315 to 0342) GMT
05-11-2024/(0845 to 0912) IST



Cloud distribution: (a) Isolated: <25%, Scattered:25-50%, Broken: 51-75%, Solid:>75%, Convection Intensity: (a) Weak: Cloud Top Temperature (CTT) >-25°C, (b) Moderate: CTT: - 25°C to -40°C, (c) Intense: CTT: - 41°C to -70°C and (d) Very Intense: : Less than -70°C
PROBABILITY OF CYCLOGENESIS (FORMATION OF DEPRESSION):NIL: 0%, LOW: 1-33%, , MODERATE: 34-66% AND HIGH: 67-100%
This is a guidance Bulletin for WMO/ESCAP Panel Member countries. Visit respective National websites for Country specific Bulletins